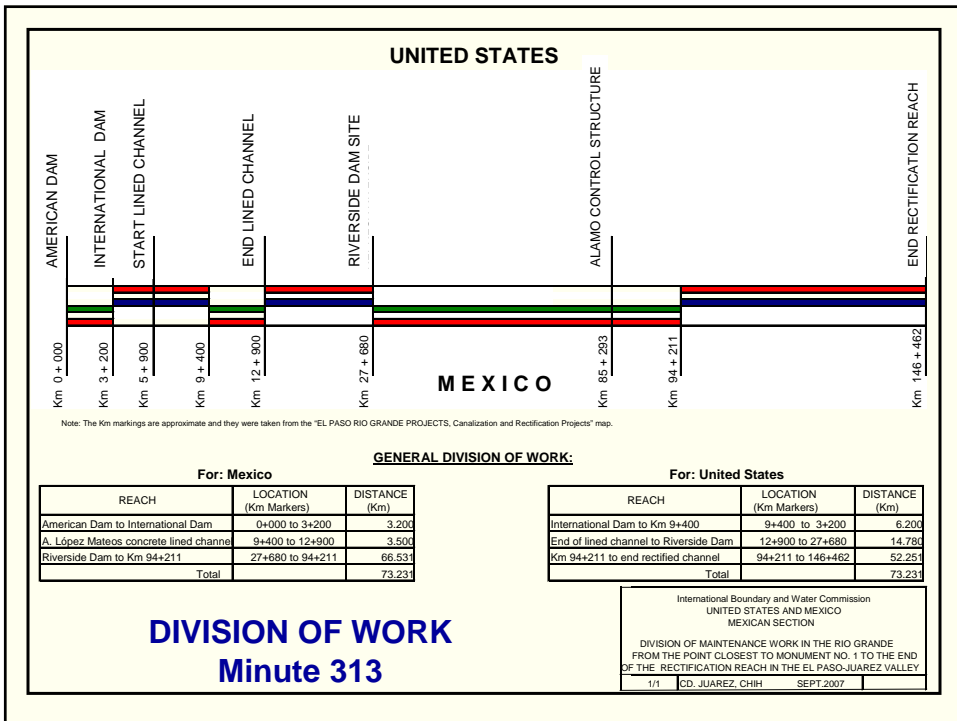
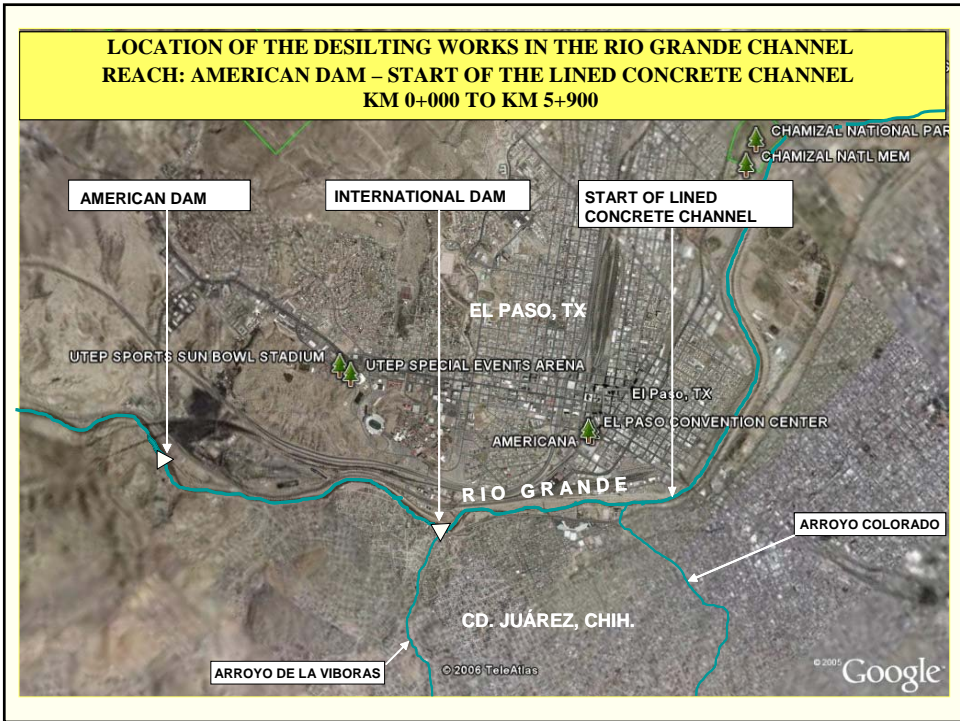
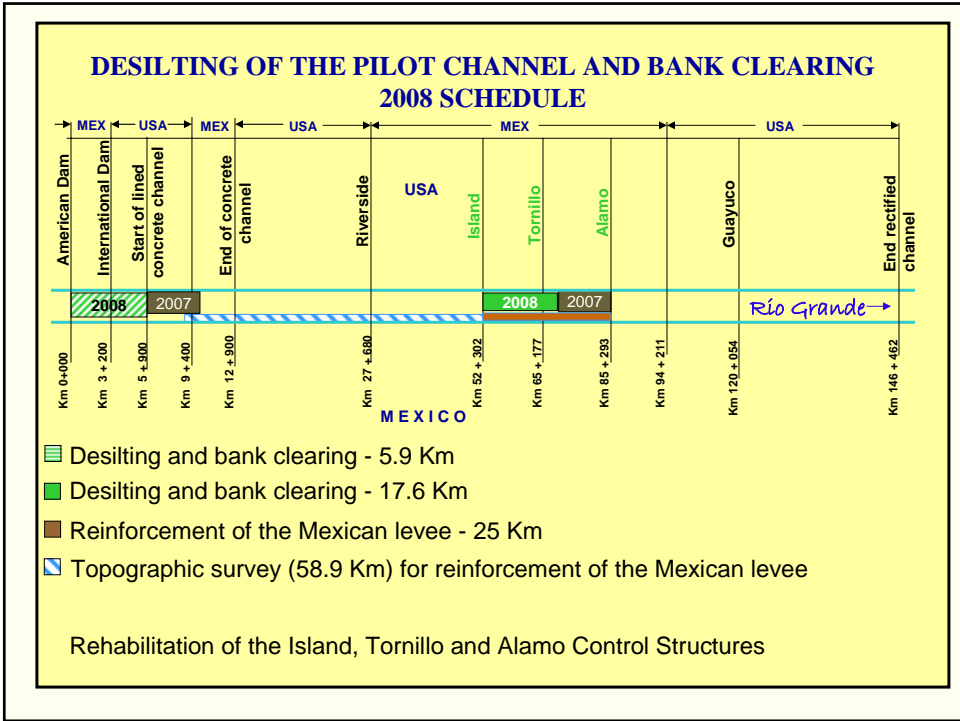


## MAINTENANCE OF THE RIO GRANDE CHANNEL 2008 SCHEDULE



**EL PASO, TEXAS-CD. JUAREZ, CHIH.**





**DESILTING OF THE RIO GRANDE CHANNEL BETWEEN AMERICAN DAM  
AND THE START OF THE LINED CONCRETE CHANNEL  
KM 0+000 TO KM 5+900**

- REACH FROM AMERICAN DAM TO INTERNATIONAL DAM 3.2 KM (2 MILES)
  - Corresponding to Mexico
  - Progress 49.54 % of 220,000 m<sup>3</sup>
- REACH INTERNATIONAL DAM – START OF THE LINED CONCRETE CHANNEL, 2.7 KM (1.7 MILES)
  - Corresponding to the United States
  - Progress: 70 % of 207,200 m<sup>3</sup> of silt.



**DESILT THE PILOT CHANNEL AND BANK CLEARING FOR 17.6 KM OF  
THE RIVER CHANNEL, BETWEEN THE ALAMO CONTROL STRUCTURE  
AND THE RIVERSIDE DAM SITE**

- DESILT 6 KM OF THE RIO GRANDE RECTIFICATION REACH FROM KM 67+500 TO KM 61+500.
  - Corresponding to Mexico
  - Progress 97.21 % of 134,000 m<sup>3</sup>
- DESILT 6 KM OF THE RIO GRANDE RECTIFICATION REACH FROM KM 61+500 TO KM 55+500.
  - Corresponding to Mexico
  - Progress 47.8 % of 135,500 m<sup>3</sup>
  -
- DESILT 5.6 KM OF THE RIO GRANDE RECTIFICATION REACH FROM KM 55+500 TO KM 49+900.
  - Corresponding to Mexico
  - Progress 89.4 % of 128,000 m<sup>3</sup>



**MAINTENANCE AND LINING OF THE CROWN OF THE MEXICAN LEVEE  
IN 2 SECTIONS THAT TOGETHER TOTAL 25 KM., BETWEEN THE ALAMO  
CONTROL STRUCTURE AND THE UPSTREAM END OF THE LINED  
CONCRETE CHANNEL.**

13.5 Km in REACH 1 (KM 83+600 to KM 70+100)

11.5 Km in REACH 2 (KM 24+500 to KM 13+000)

43.51 % PROGRESS IN THESE 2 REACHES.

TOPOGRAPHIC SURVEY OF 58.9 KM OF RIVER TO LOCATE THE GRADE LEVEL OF THE MEXICAN LEVEE AND ESTIMATE THE VOLUMES OF MATERIAL NEEDED FOR RESTORATION (KM 9+400 TO KM 70+000) PROGRESS 34.06%



**CONTROL STRUCTURES IN THE RIO GRANDE  
RECTIFICATION REACH**

• 29.01 % OF THE MAINTENANCE AND REPAIR OF THE CONTROL STRUCTURES:

- ALAMO
- TORNILLO
- ISLAND (LA ISLA)



**CLEARING OF 8 KM OF MEXICAN BANK UPSTREAM OF THE ZARAGOZA - YSLETA INTERNATIONAL BRIDGE IN 2008**



**DESILTING THE CONFLUENCE OF NAVARRETE ARROYO AND RIO GRANDE WILL BE INCLUDED IN THE 2008 SCHEDULE**



### CONAGUA'S 2007-2010 MULTIYEAR SCHEDULE

\$130,672,750 pesos were allocated to file No. 0716BOO.0053, for the maintenance and preservation of the Rio Grande rectification reach from Monument No.1 to the end of the rectification reach, approximately 146 Km (91 miles) The budget will be distributed as follows:

YEAR	AMOUNT (PESOS)
2007	\$ 19,200,000.00
2008	\$ 37,500,000.00
2009	\$ 37,500,000.00
2010	\$ <u>36,472,750.00</u>
	\$ 130,672,750.00

Funds for 2009 are still pending disbursement for use during that fiscal year.